



Connect Autodesk:

Connect Autodesk and De-clutter your PLM

SAPPER.

Autodesk PLM 360 offers powerful product life cycle management tools that make product development easier and faster. But we are sure that you are not yet fully utilizing all its capabilities. To fully understand its capabilities, you need to connect the applications involved in creating, selling and servicing your products. Sapper offers an integrated system to Autodesk users to swiftly connect Autodesk applications with other business operations including CRM and ERP systems. Autodesk includes some critical and technical stuff like design calculations, bill of material and connecting these other clouds or on-premise systems eliminates the manual errors occurring while entering these data sets. So instead of procuring product information from different applications, you can view through a single interface.

Sapper's API integration system includes predefined connectors between Autodesk 360 and other third-party apps. Making data gathering, storing and communicating easy. Commonly connected apps include slack, to SQL server.

Autodesk Integration Benefits

- Automate the creation, assignment and resolution of tasks.
- Send Autodesk data to other applications
- Eliminate the risk of data duplication between different systems
- Improve the speed and process of design approvals
- Easily connect the Autodesk tools with other third-party tools.

With such an intuitive and integrated platform, you can:

Design Integrations:



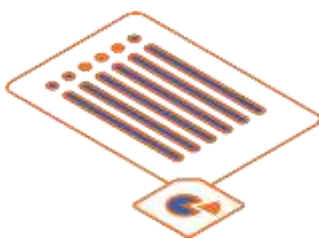
- Connect any data sources
- Build customized workflows
- Integrate any application with AI
- Automate manual business process
- Intelligently map data fields

Deploy Easily:



- Create and Publish API's internally or externally
- Create secure local connections with inhouse applications
- Scale flexibly to meet the needs of real-time
- Run cloud, on-premise or hybrid

The Sapper's API integration enables enterprises to integrate thousands of applications and create and deploy API's from existing systems.



With such an intuitive and integrated platform, you can:

Manage from Anywhere/Any Device



- Manage from harmony cloud
- Provide secure access with user permissions
- Get Real-time notifications'
- Integrate intelligently across applications
- Manage your API's and view enhanced analytics

Benefits of Sapper Intelligent Integration and Automation



- Gain real-time visibility in all aspects of business
- Automate and customize workflows
- Amplify the value of customer data within Salesforce by integrating it with other applications
- Save time and empower employees to focus on core jobs
- Record accurate data
- Leverage the power of automation and AI
- Enable customized sales and marketing offers
- Enable real-time customer service
- Realize a return on investment quickly

Connect to 1000+ Applications



APPLICATIONS

- Salesforce
- Twilio
- SAP
- Workday
- Snowflake
- ServiceNow
- Slack
- PeopleSoft
- Oracle
- And more

API's



- Web Services
- In-House Applications
- OData services
- And more

DATABASES



- My SQL
- Sybase
- Oracle
- And more
- Firebase

OTHER PROTOCOLS

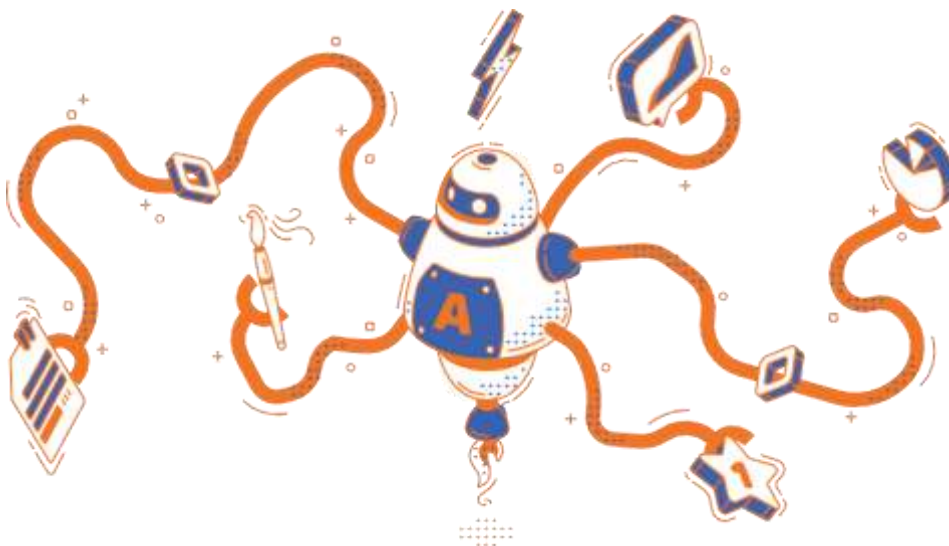


- JDBC/ODBC
- LDAP
- FTP
- SMTP/POP3
- File Shares
- and more

DATA FORMATS



- JSON
- ZIP
- XML
- Flat/Hierarchical Text Structures
- PDF
- and more



SAPPER.

Contact Sapper for more information info@sapper.ai