



SAPPER.

Health Apps Integration

Get connected with
Health Applications

Unhealthy employees are a financial drain for a company. When the employees health is compromised, productivity is negatively impacted. Hence, Physical and mental health both together plays a vital role here. Organizations are becoming more concerned about the employees than ever, This pandemic is making us realize the importance of healthy habits and a good routine. Organizations are even using some amazing tools to make sure their employees munch , sleep and take breaks on time, meditate to eliminate stress and add peace in life and most importantly access healthcare services on the go.

With Sapper’s intelligent automation you can integrate applications like Calm, FoodBot , CoBot , WoeBot etc and see the whole picture with just a click. It means you don’t have to scroll and check all these applications individually, you will get everything under one single roof.

With such an intuitive and integrated platform, you can:

Design Integrations:



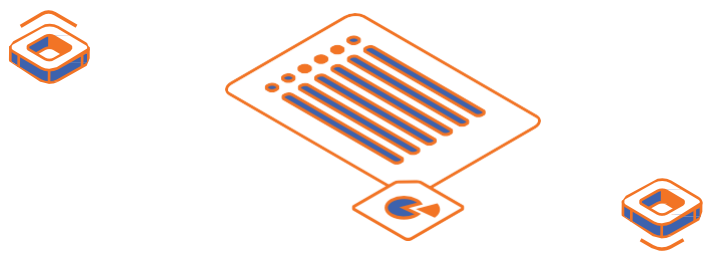
- Connect any data sources
- Build customized workflows
- Integrate any application with AI
- Automate manual business process
- Intelligently map data fields

Deploy Easily:



- Create and Publish API's internally or externally
- Create secure local connections with inhouse applications
- Scale flexibly to meet the needs of real-time
- Run cloud, on-premise or hybrid

The Sapper’s API integration enables enterprises to integrate thousands of applications and create and deploy API’s from existing systems.



With such an intuitive and integrated platform, you can:

Manage from Anywhere/Any Device



- Manage from harmony cloud
- Provide secure access with user permissions
- Get Real-time notifications'
- Integrate intelligently across applications
- Manage your API's and view enhanced analytics

Benefits of Sapper Integration



- Gain real-time visibility in all aspects of business
- Automate and customize workflows
- Amplify the value of customer data within Salesforce by integrating it with other applications
- Save time and empower employees to focus on core jobs
- Record accurate data
- Leverage the power of automation and AI
- Enable customized sales and marketing offers
- Enable real-time customer service
- Realize a return on investment quickly

Connect to 1000+ Applications



APPLICATIONS

- Salesforce
- Twilio
- SAP
- Workday
- Snowflake
- ServiceNow
- Slack
- PeopleSoft
- Oracle
- And more

API's



- Web Services
- In-House Applications
- OData services
- And more

DATABASES



- My SQL
- Sybase
- Oracle
- And more
- Firebase

OTHER PROTOCOLS

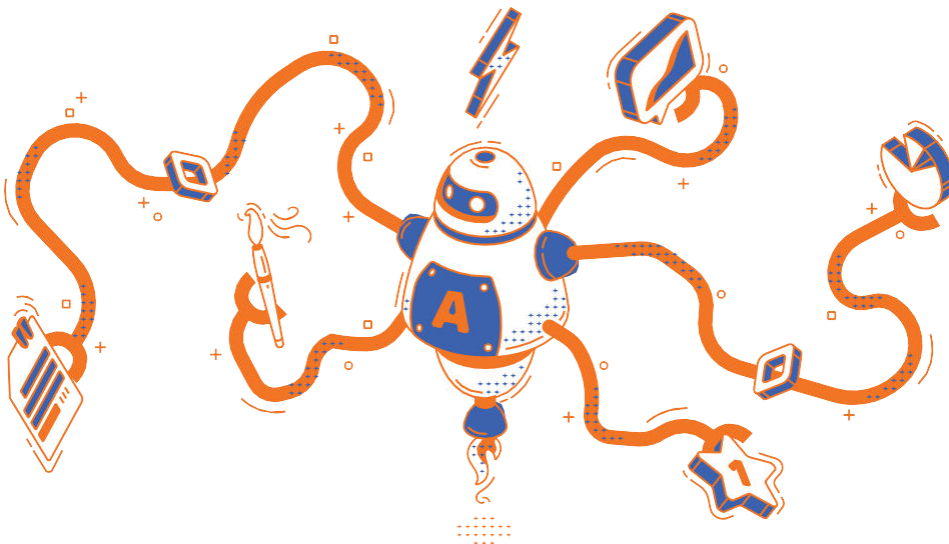


- JDBC/ODBC
- LDAP
- FTP
- SMTP/POP3
- File Shares
- and more

DATA FORMATS



- JSON
- ZIP
- XML
- Flat/Hierarchical Text Structures
- PDF
- and more



SAPPER.

Contact Sapper for more information info@sapper.ai