



## Integrate ServiceNow:

# Integrate ServiceNow for Business Management

# SAPPER.

ServiceNow is an excellent tool for technical and business management support. It is widely used across the business process for IT service management, IT operations management, IT business management and a variety of customer interactions. But like every application, even ServiceNow has limitations. But combining ServiceNow with other applications can eliminate these inefficiencies. And that's what Intelligent Integration and automation does.

Sapper's intelligent integration and automation can help you integrate ServiceNow to other on-premise or cloud applications. This way you can create automated workflows based on triggers. Sapper's pre-built automation can help you integrate ServiceNow with popular applications like Slack and Salesforce.

Intelligent integration and automation can help you manage data confidentiality across devices, better customer support, real-time analysis and reporting, and improved operational tracking

The Sapper's intelligent integration and automation enables enterprises to integrate thousands of applications and create and deploy API's from existing systems

### With such an intuitive and integrated platform, you can:

#### Design Integrations:



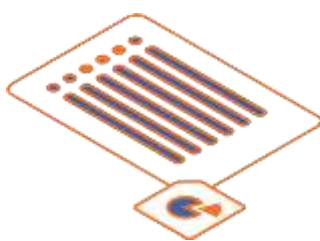
- Connect any data sources
- Build customized workflows
- Integrate any application with AI
- Automate manual business process
- Intelligently map data fields

#### Deploy Easily:



- Create and Publish API's internally or externally
- Create secure local connections with inhouse applications
- Scale flexibly to meet the needs of real-time
- Run cloud, on-premise or hybrid

The Sapper's API integration enables enterprises to integrate thousands of applications and create and deploy API's from existing systems.



With such an intuitive and integrated platform, you can:

### Manage from Anywhere/Any Device



- Manage from harmony cloud
- Provide secure access with user permissions
- Get Real-time notifications'
- Integrate intelligently across applications
- Manage your API's and view enhanced analytics

### Benefits of Sapper Intelligent Integration and Automation



- Gain real-time visibility in all aspects of business
- Automate and customize workflows
- Amplify the value of customer data within Salesforce by integrating it with other applications
- Save time and empower employees to focus on core jobs
- Record accurate data
- Leverage the power of automation and AI
- Enable customized sales and marketing offers
- Enable real-time customer service
- Realize a return on investment quickly

### Connect to 1000+ Applications



#### APPLICATIONS

- Salesforce
- SAP
- Snowflake
- Slack
- Oracle
- Twilio
- Workday
- ServiceNow
- PeopleSo
- And more

### API's



- Web Services
- In-House Applications
- OData services
- And more

### DATABASES



- My SQL
- Oracle
- Firebase
- Sybase
- And more

### OTHER PROTOCOLS

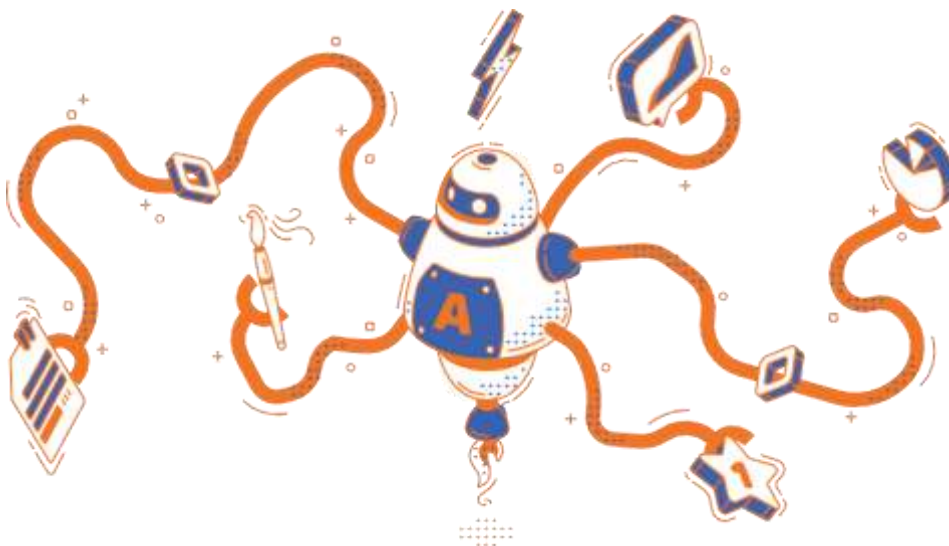


- JDBC/ODBC
- FTP
- File Shares
- LDAP
- SMTP/POP3
- and more

### DATA FORMATS



- JSON
- XML
- PDF
- ZIP
- Flat/Hierarchical Text Structures
- and more



**SAPPER.**

Contact Sapper for more information [info@sapper.ai](mailto:info@sapper.ai)