



Integrate Workday:

Integrate Workday Data across the Enterprise

SAPPER.

Workday is an excellent tool of finance and human capital management, It is widely used across enterprises for employee management and better financial decisions. But the human resource and finance department also has many other applications which work simultaneously with Workday. For a seamless operation, you need to integrate these on-premise or cloud-based applications into Workday.

Sapper's Intelligent Integration and automation platform allows you to seamlessly integrate various Workday applications to any in-house or cloud-based applications. Using Sapper's API and integration design, enterprises can easily build workflows across different activities such as talent management, payroll, employee benefits financial decisions etc. Combine all the cross functions like HCM, finance, payroll, CRM, analytics across enterprises to provide a complete view of data across the enterprise.

With such an intuitive and integrated platform, you can:

Design Integrations:



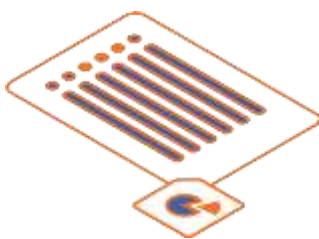
- Connect any data sources
- Build customized workflows
- Integrate any application with AI
- Automate manual business process
- Intelligently map data fields

Deploy Easily:



- Create and Publish API's internally or externally
- Create secure local connections with inhouse applications
- Scale flexibly to meet the needs of real-time
- Run cloud, on-premise or hybrid

The Sapper's API integration enables enterprises to integrate thousands of applications and create and deploy API's from existing systems.



With such an intuitive and integrated platform, you can:

Manage from Anywhere/Any Device



- Manage from harmony cloud
- Provide secure access with user permissions
- Get Real-time notifications'
- Integrate intelligently across applications
- Manage your API's and view enhanced analytics

API's



- Web Services
- In-House Applications
- OData services
- And more

Benefits of Sapper Intelligent Integration and Automation



- Gain real-time visibility in all aspects of business
- Automate and customize workflows
- Amplify the value of customer data within Salesforce by integrating it with other applications
- Save time and empower employees to focus on core jobs
- Record accurate data
- Leverage the power of automation and AI
- Enable customized sales and marketing offers
- Enable real-time customer service
- Realize a return on investment quickly

DATABASES



- My SQL
- Oracle
- Firebase
- Sybase
- And more

OTHER PROTOCOLS



- JDBC/ODBC
- FTP
- File Shares
- LDAP
- SMTP/POP3
- and more

Connect to 1000+ Applications



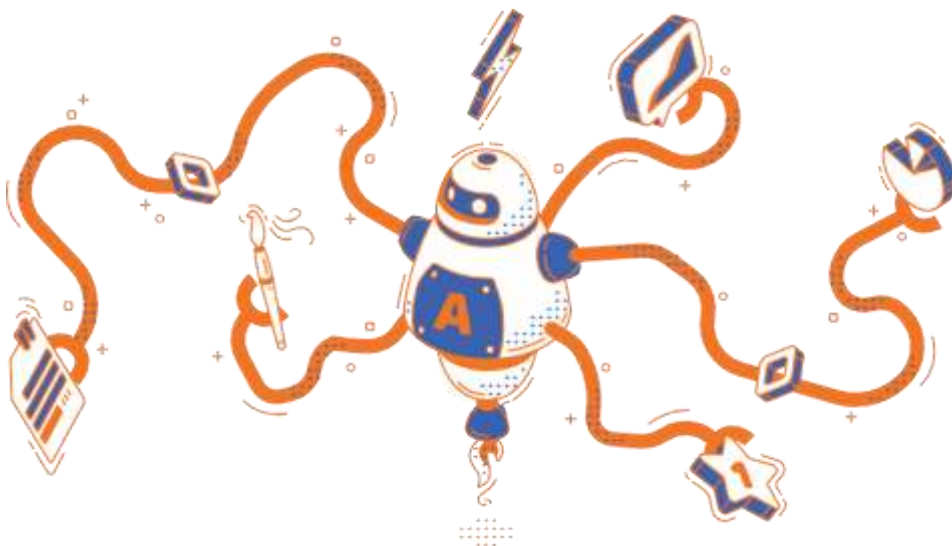
APPLICATIONS

- Salesforce
- SAP
- Snowflake
- Slack
- Oracle
- Twilio
- Workday
- ServiceNow
- PeopleSoft
- And more

DATA FORMATS



- JSON
- XML
- PDF
- ZIP
- Flat/Hierarchical Text Structures
- and more



SAPPER.

Contact Sapper for more information info@sapper.ai