



NetSuite Integration:

SAPPER.

A business suite for end-to-end Business System

According to NetSuite “Six out of seven best performing tech stocks of 2019 are NetSuite customers” That exhibits how NetSuite is dynamically transforming the business industry.

It's a well known cloud based ERP system that helps you manage discrete processes like finance, ecommerce, customer relationships, inventory and warehouse management. NetSuite is a whole itself, but you can expand its functionality with Sapper's Smart Intelligent Integration and Automation.

There are plenty of applications used by the stakeholders , which makes data accessibility problematic. With Sapper's API platform you can quickly integrate the data from different sources with NetSuite to boost accessibility, convenience and the most important – Performance.

You can customize your integration allowing vivid applications and platforms converse, synchronize and work together as a single platform. This empowers NetSuite users to work even more efficiently.

With such an intuitive and integrated platform, you can:

Design Integrations:



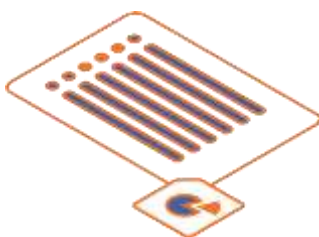
- Connect any data sources
- Build customized workflows
- Integrate any application with AI
- Automate manual business process
- Intelligently map data fields

Deploy Easily:



- Create and Publish API's internally or externally
- Create secure local connections with inhouse applications
- Scale flexibly to meet the needs of real-time
- Run cloud, on-premise or hybrid

The Sapper's API integration enables enterprises to integrate thousands of applications and create and deploy API's from existing systems.



With such an intuitive and integrated platform, you can:

Manage from Anywhere/Any Device



- Manage from harmony cloud
- Provide secure access with user permissions
- Get Real-time notifications'
- Integrate intelligently across applications
- Manage your API's and view enhanced analytics

Benefits of Sapper Intelligent Integration and Automation



- Gain real-time visibility in all aspects of business
- Automate and customize workflows
- Amplify the value of customer data within Salesforce by integrating it with other applications
- Save time and empower employees to focus on core jobs
- Record accurate data
- Leverage the power of automation and AI
- Enable customized sales and marketing offers
- Enable real-time customer service
- Realize a return on investment quickly

Connect to 1000+ Applications



APPLICATIONS

- Salesforce
- SAP
- Snowflake
- Slack
- Oracle
- Twilio
- Workday
- ServiceNow
- PeopleSoft
- And more

API's



- Web Services
- In-House Applications
- OData services
- And more

DATABASES



- My SQL
- Oracle
- Firebase
- Sybase
- And more

OTHER PROTOCOLS

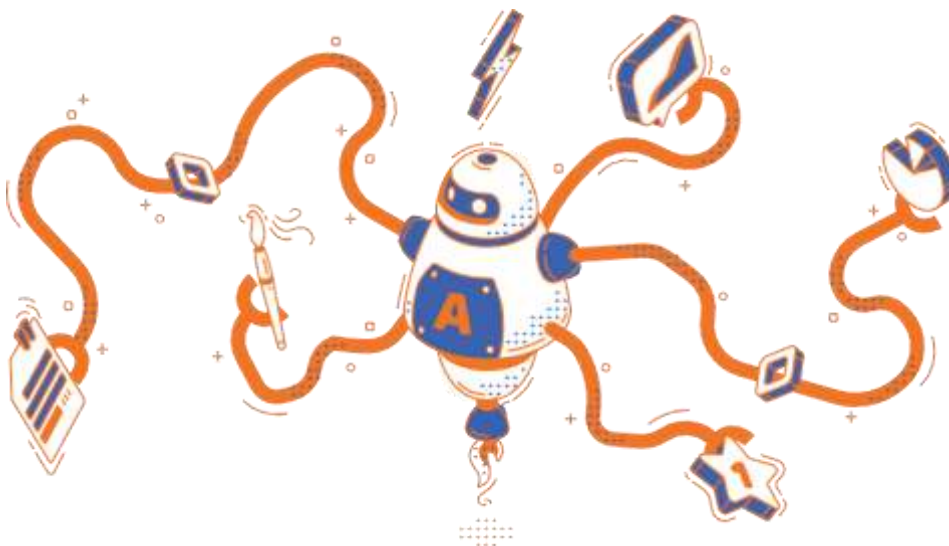


- JDBC/ODBC
- FTP
- File Shares
- LDAP
- SMTP/POP3
- and more

DATA FORMATS



- JSON
- XML
- PDF
- ZIP
- Flat/Hierarchical Text Structures
- and more



SAPPER.

Contact Sapper for more information info@sapper.ai