



## Sapper Overview:

Imagine, Develop and  
**Run your Automation**

**SAPPER.**

### About Sapper

Sapper is an Intelligent Integration and Automation Platform. Leverage Sapper to automate your application integration, data integration, AI and Bot integration. It is as simple as connecting the dots.

You can leverage Sapper to accelerate integrations between applications, eliminate manual errors in processes, accelerate time-consuming activities and eliminate repetitive tasks.

### Enabling Intelligent Integration & Automation

#### Application Integration

Intelligently automate integrations between SaaS applications, data applications and APIs.

#### SaaS Data Integration

Intelligently automate data integration between cloud applications, files, spreadsheets and data stores.

### Bot and AI Integration

Automate interactions and integrations between different AI systems and Bots.

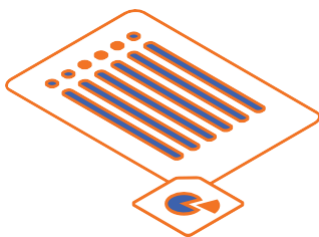
### Develop and Innovate Rapidly with Sapper

Sapper is an easy to use, enhance and maintain Intelligent Integration and Automation Platform. Our AI-driven design ensures that you no longer need to use multiple purpose-built tools for your application integration, data integration and bot automation.

With Sapper you can go from thinking about an automation to having it working less than a week. We provide several pre-built automations for employee onboarding, learning management as well as synchronizing data between your cloud-based applications.

Automation is as simple as connecting the dots with Sapper.

**With Sapper you accelerate the automation of your departmental or business functions by integrating all the applications you use**





## Sapper Overview:

# Imagine, Develop and Run your Automation

# SAPPER.

## How it Works

### Imagine your Automation

Easy-to-use drag and drop user experience suited for both the Business and Technical users helps them integrate applications to automate their workflows. Now, add connections and put your automation together in a flash.

### Develop your Automation

Leverage Sapper's built-in intelligence capabilities manage your enterprise Automation.

We provide pre-built automations for most commonly used patterns as well as custom-based automations.

Connect with more than 350+ applications

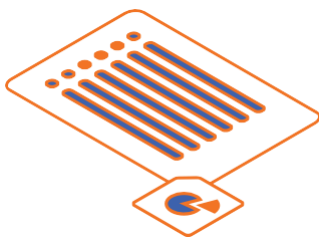
## Run Your Automation

Now put the automation you have innovated to test. Whether it's one of our out-of-the-box automations or something that you have custom built for your organization, you can go from concept to production in a matter of hours.

### How Sapper Assists Enterprises

- Ability to deploy large scale automation
- Sync any applications your enterprise utilizes
- Make collaboration a part of your culture
- Real-time data at your disposal

Sapper enables enterprises to easily create any automation by integrate hundreds of applications, data and AI/bots together



## Sapper Overview:

# Imagine, Develop and Run your Automation

# SAPPER.

With such an intuitive and integrated platform, you can:

### Design Automation:

- Connect any application and data source(s)
- Build customized automation
- Integrate any automation with AI
- Intelligently map data fields
- Enhance any application with AI

### Deploy Automation:

- Run on any cloud
- A large library of pre build automations that you can select and deploy
- Create and Publish APIs internally or externally
- Create secure local connections with inhouse applications
- Scale flexibly to meet the needs of real-time

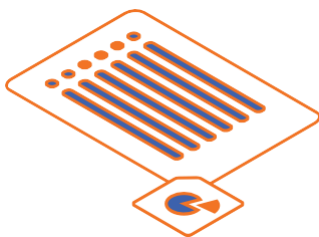
### Manage from Anywhere/Any Device

- Provide secure access with user permissions
- Get Real-time notifications'
- Integrate intelligently across applications
- Manage your API's and view enhanced analytics

### Benefits of Sapper Intelligent Integration and Automation

- Accelerate the integration process by deploying pre-built automations.
- Increase the availability of integrations for your daily technical and business workflows.
- Sync applications to extract real-time data and achieve greater time-to-value.
- Provide a conversational experience for business users to automate any application task or get information from any application
- Ease of doing business. It is as simple as connecting the dots.

Sapper provides hundreds of pre-built automations that you can leverage for rapidly reduce the work you need to do for your business functions



With such an intuitive and integrated platform, you can:



### Connections

- JDBC/ODBC
- LDAP
- FTP
- SMTP/POP3
- File Shares



### APIs

- Web Services
- REST
- SOAP



### DATA FORMATS

- JSON
- Flat/Hierarchical Text Structures
- XML
- CSV
- PDF
- and many more



### DATABASES

- My SQL
- Mongo DB
- Oracle
- Redis
- Snowflake
- Redshift

### Connect to 350+ Applications



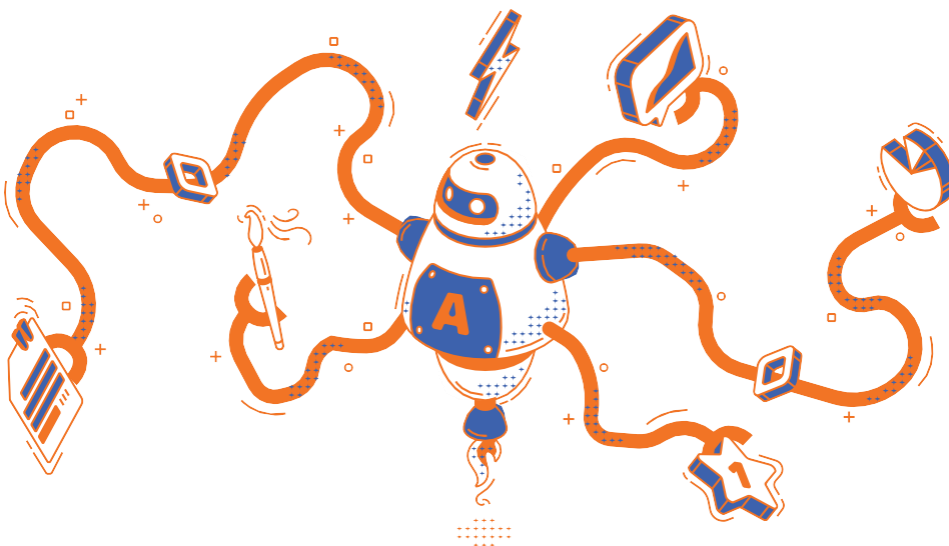
#### APPLICATIONS

- Salesforce
- Twilio
- SAP
- Workday
- Snowflake
- ServiceNow
- Slack
- PeopleSoft
- Teams
- Marketo
- Oracle
- HubSpot
- Jira
- Teams
- SumTotal
- ZenDesk
- Saba
- BambooHR
- Shopify
- FreshDesk
- Zoho
- Ship Station
- Udemy
- Quick Books
- Zuora
- Amazon Redshift
- Looker

### Pre Built Automations



- Employee Onboarding Automation
- Employee Offboarding Automation
- Payroll and Benefits Automation
- Learning Management Automation
- Order to Cash Automation



**SAPPER.**

Contact Sapper for more information [info@sapper.ai](mailto:info@sapper.ai) / +1 650-804-5858