

## Splunk Integration:

# Unlock new possibilities with Splunk Integration

# SAPPER.

Splunk is a software that captures, indexes and correlates real-time data in a searchable repository from which it can generate graphs, reports, alerts, dashboards and visualizations. Splunk makes machine data accessible across an organization by identifying data patterns, providing metrics, diagnosing problems and providing intelligence for business operations.

Sapper offers an integrated system to Splunk users to swiftly connect Splunk with all the 3<sup>rd</sup> party applications, platforms, sources and devices used by stakeholder to get all the crucial insights in a centralized platform.

### Benefits of Splunk Integration:

- Greater visibility of security alerts in a unified platform.
- Fetch data from different sources and analyze them together
- Generate reports, graphs, charts with just a click.
- Centralized approach to detect potential security threats for organizational risk analysis capabilities such as risk indicators, user profiles, and risk scores.
- Ability to combine and correlate the information of a user account with external data sources.

## With such an intuitive and integrated platform, you can:

### Design Integrations:



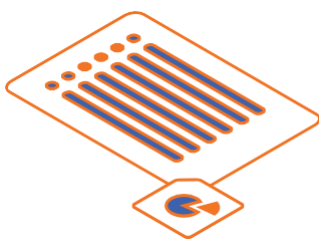
- Connect any data sources
- Build customized workflows
- Integrate any application with AI
- Automate manual business process
- Intelligently map data fields

### Deploy Easily:



- Create and Publish API's internally or externally
- Create secure local connections with inhouse applications
- Scale flexibly to meet the needs of real-time
- Run cloud, on-premise or hybrid

The Sapper's API integration enables enterprises to integrate thousands of applications and create and deploy API's from existing systems.



With such an intuitive and integrated platform, you can:

### Manage from Anywhere/Any Device



- Manage from harmony cloud
- Provide secure access with user permissions
- Get Real-time notifications'
- Integrate intelligently across applications
- Manage your API's and view enhanced analytics

### Benefits of Sapper Integration



- Gain real-time visibility in all aspects of business
- Automate and customize workflows
- Amplify the value of customer data within Salesforce by integrating it with other applications
- Save time and empower employees to focus on core jobs
- Record accurate data
- Leverage the power of automation and AI
- Enable customized sales and marketing offers
- Enable real-time customer service
- Realize a return on investment quickly

### Connect to 1000+ Applications



#### APPLICATIONS

- Salesforce
- Twilio
- SAP
- Workday
- Snowflake
- ServiceNow
- Slack
- PeopleSoft
- Oracle
- And more

### API's



- Web Services
- In-House Applications
- OData services
- And more

### DATABASES



- My SQL
- Sybase
- Oracle
- And more
- Firebase

### OTHER PROTOCOLS

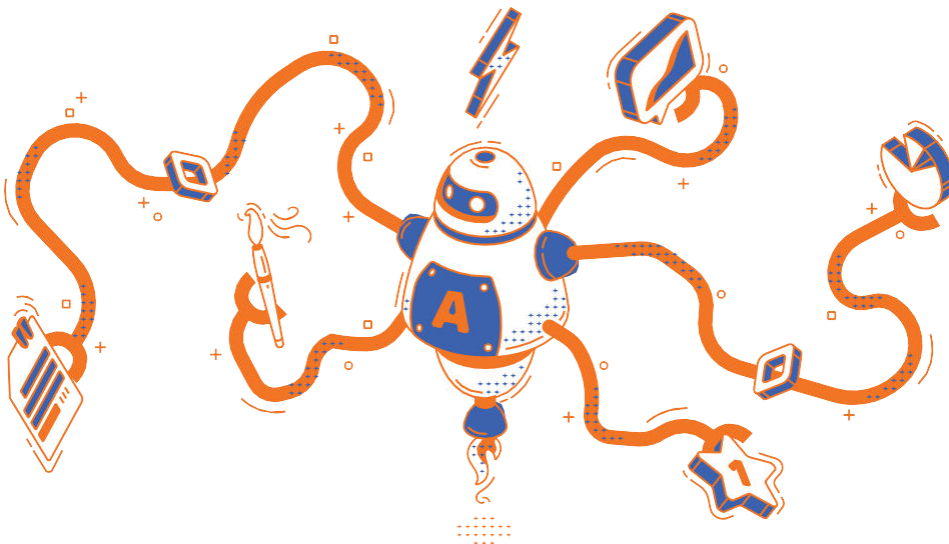


- JDBC/ODBC
- LDAP
- FTP
- SMTP/POP3
- File Shares
- and more

### DATA FORMATS



- JSON
- ZIP
- XML
- Flat/Hierarchical Text Structures
- PDF
- and more



**SAPPER.**

Contact Sapper for more information [info@sapper.ai](mailto:info@sapper.ai)