

## Sapper for Health Care

# SAPPER.

## Connected Patient Experience

With Covid-19 pandemic, healthcare has been the centre of conversation around the world. A proactive participation in healthcare has been the talk of the town. Connected Patient Experience is the combination of patient's health knowledge be combined with IT systems. Patient activation combined with intelligent automation can give hospitals a better opportunity to treat their patients. Improving the healthcare system in general.

With patient activation, all the information regarding a patient including genetics, environment, behaviour, interests, could be fed into a system and shared across devices. Autonomous integration allows this data to be shared across teams and departments without losing efficiency. Pharmacy, insurance, clinical reports patient portal could be integrated through intelligent automation, this will allow healthcare organizations to provide better healthcare experience to their patients.

### Sapper Intelligent Automation enables you to:

#### Design Automations:



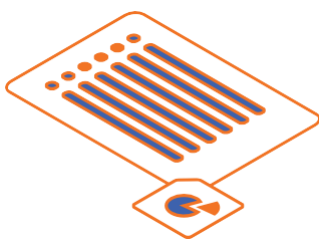
- Connect any applications and data sources
- Rapidly build customized automations
- Integrate any application with Bots and AI
- Conversational UI for business users
- AI Enabled automapping of data

#### Deploy Easily:



- Run on any cloud
- Large library of prebuilt automations
- Create and publish APIs
- Scale flexibly to meet business demands

**Sapper's Intelligent Automation enables enterprises to integrate applications, bots, AI systems and data**



With such an intuitive and integrated platform, you can:

### Manage from Anywhere



- Built in security and compliances that meet the highest industry standards
- Comprehensive monitoring, debugging and automation mining
- Enhanced operational and business analytics

### Benefits: Sapper Intelligent Automation



- Single unified platform for application, Bots, AI and data automations. Lower cost of ownership and maintenance
- Accelerate innovation by deploying pre-built automations. Go from concept to production in hours.
- Conversational UI that helps business users interact with automations and systems
- Retail domain accelerators

### Healthcare pre-built Automations



#### APPLICATIONS

- Pharmacy Management Systems
- Payor Systems
- Medical ERP
- Clinical Research and Trials
- Patient Portal
- Practice Management
- And more...

### Healthcare Prebuilt automations



- Covid Back to Work Automation
- Healthcare Interoperability Automation
- Connected Patient Automation

### DATABASES



- My SQL
- Oracle
- Firebase
- Sybase
- And more

### OTHER PROTOCOLS

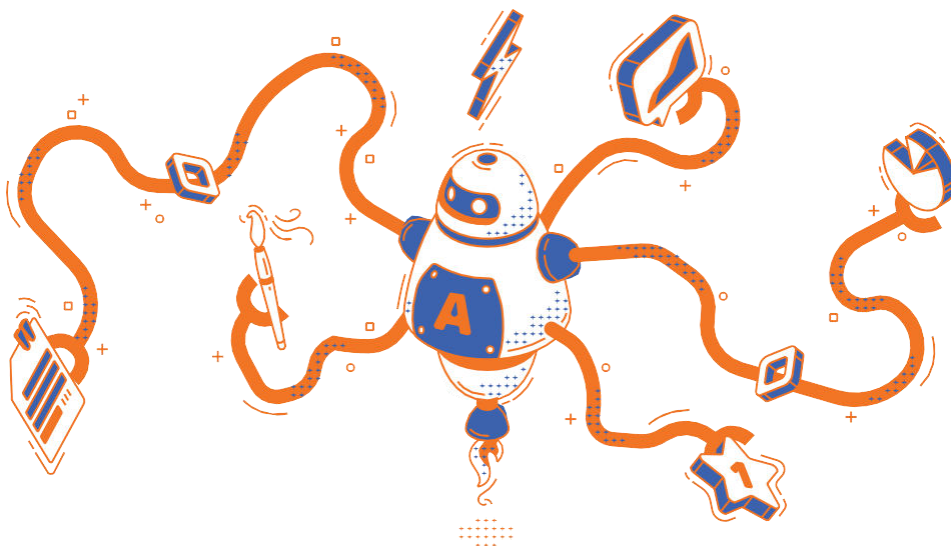


- FTP
- REST
- SOAP
- LDAP
- SMTP/POP3
- JDBC/ODBC

### DATA FORMATS



- JSON
- XML
- PDF
- CSV
- Flat/Hierarchical Text Structures
- and more



**SAPPER.**

Contact Sapper for more information [info@sapper.ai](mailto:info@sapper.ai)